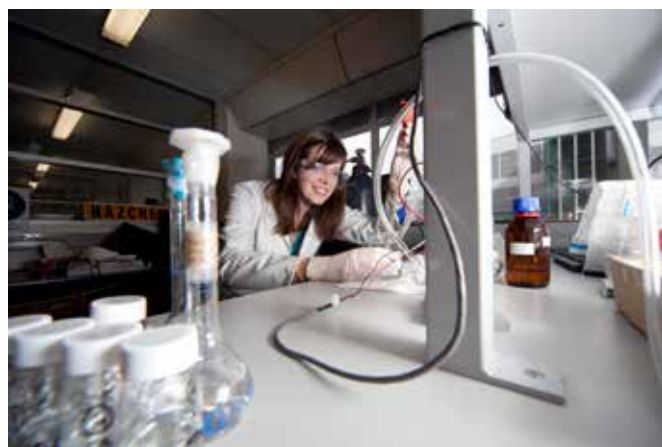
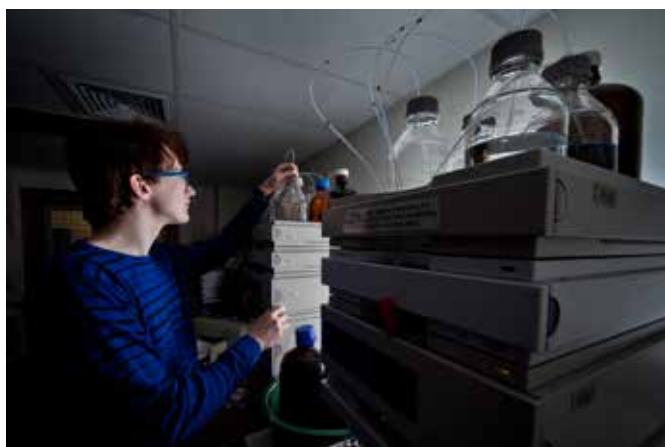


Introduction to Postgraduate Studies

Wednesday 9 October 2013

The School of Chemical Sciences is holding an informative session for Stage III students, where students can find out about postgraduate opportunities available in the School.

This session will be followed by our annual Oktoberfest which is an opportunity for you to speak in an informal setting with many of the academics who could be your potential supervisors. Students who attend the Introduction to Postgraduate Study session will receive one complimentary ticket to Oktoberfest.



Postgraduate Diploma in Science (PGDipSci)

The Postgraduate Diploma in Science is a one year programme and is the usual path for students intending to go on and complete a research MSc in chemistry. The research MSc is a one year programme consisting of a research project and thesis. It is possible to enter into a PhD on completion of a research MSc with sufficiently high grades. Postgraduate diplomas and/or MSc degrees are available in Chemistry, Food Science, Forensic Science, and Wine Science. The programme must be completed within one year of initial enrolment if enrolled full-time or within 4 years of enrolment if enrolled part-time.

Bachelor of Science (Honours) BSc (Hons)

The one-year BSc(Hons) programme is an option for well prepared students wishing to study chemistry in greater depth than a BSc. The BSc(Hons) degree takes one year and consists of course work, a research project and a dissertation. It is possible to enter directly into a PhD on completion of BSc(Hons), this programme can also provide a faster path to the PhD degree for students intending to perform advanced research. The BSc(Hons) is available in Chemistry, Food Science, and Medicinal Chemistry. It is also a path for students intending to go on and complete an MSc in Chemistry.

Master of Science (MSc)

The research MSc takes one year and consists of a research thesis completed under the supervision of one of the members of staff in the School of chemical Sciences. Students are only able to enrol in a PhD after having completed this degree follows on from a Postgraduate Diploma in Chemistry which is a one-year coursework programme.

PhD study

This comprises a programme of advanced study and research, the results of which are presented in a thesis. The normal prerequisite for admission to PhD in Chemistry is an Honours degree, either MSc, BSc(Hons), or BTech. Candidates with overseas qualifications should consult the Department for advice and assessment of their qualifications.

For further information about postgraduate courses:

Dr Tilo Söhnel
Phone: +64 9 373 7599 ext 89722
Email: t.soehnel@auckland.ac.nz

Introduction to PG study:
Wednesday 9 October 2013
3-4 pm in Medium Chem Lecture Theatre.

Oktoberfest:
4pm onwards in Building 303, 4th floor common room

www.chemistry.auckland.ac.nz